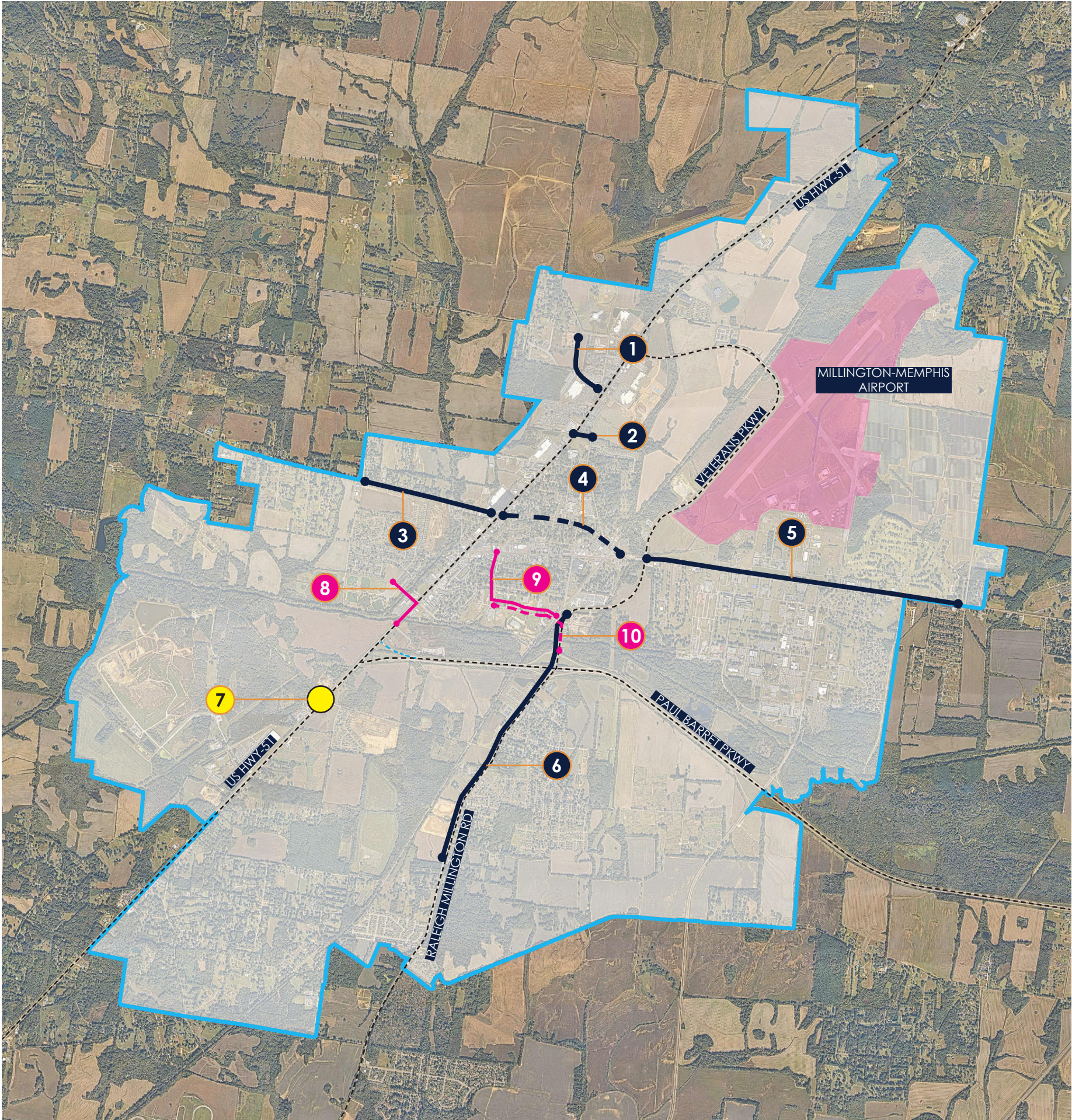


1	PROJECT: WILKINSVILLE RESURFACING LIMITS: US-51 TO WEST UNION STATUS: CARRYOVER PROJECT
2	PROJECT: WILKINSVILLE CONNECTOR LIMITS: US HWY 51 TO WILKINSVILLE STATUS: CARRYOVER PROJECT
3	PROJECT: EASLEY/SHELBY RESURFACING (ROW) LIMITS: US-51 TO NAVY, QUITO TO US-51 STATUS: CARRYOVER PROJECT
4	PROJECT: EASLEY/SHELBY RESURFACING (ROW) LIMITS: US-51 TO NAVY, QUITO TO US-51 STATUS: CARRYOVER PROJECT
5	PROJECT: NAVY ADA LIMITS: VETERANS TO BETHUEL STATUS: CARRYOVER PROJECT
6	PROJECT: RALEIGH-MILLINGTON PAVING LIMITS: BATEMAN TO CHURCH STATUS: CARRYOVER PROJECT
7	PROJECT: US-51 & BIG CREEK SIGNAL LIMITS: INTERSECTION STATUS: CARRYOVER PROJECT
8	PROJECT: USA STADIUM MULTI-USE PATH LIMITS: QUITO TO US-51, BILOXI TO BIG CREEK STATUS: NEW PROJECT
9	PROJECT: JACK HUFFMAN & NEWPORT RESURFACING LIMITS: NAVY TO BILOXI, NEWPORT TO RALEIGH STATUS: NEW PROJECT
10	PROJECT: JACK HUFFMAN MULTI-USE PATH LIMITS: NEWPORT TO RALEIGH-MILLINGTON STATUS: NEW PROJECT



MILLINGTON TIP PROJECT LOCATIONS